

\$545,000 - 11 50 Edinburgh Crt, St. Albert

MLS® #E4424754

\$545,000

3 Bedroom, 3.50 Bathroom, 1,583 sqft
Condo / Townhouse on 0.00 Acres

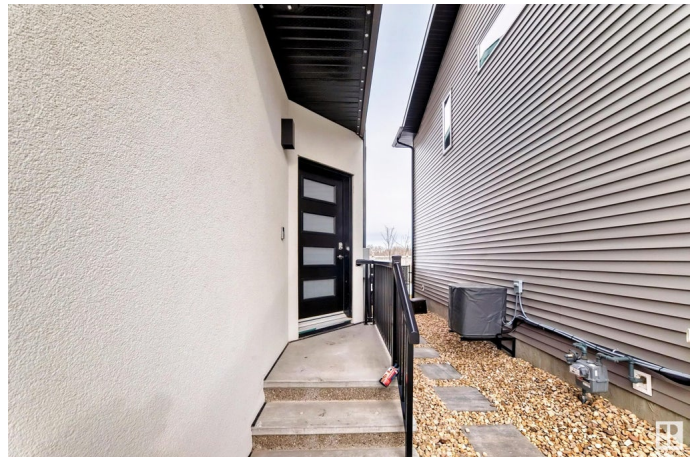
Erin Ridge North, St. Albert, AB

This condo definitely has a WOW factor!!! From double attached garage w/ over \$12000 storage shelving system, to a back yard that is fenced, has a beautiful stamped concrete pad, private deck, & no back neighbours, plus everything in between!!! Open the front door to modern colour palette, built in shelving, & 9â€™™ ceilings. Pass the 2 pc bathroom to a chefs dream kitchen w/ appliance caddies, spice pull outs, loads of cabinets & drawers & upgraded stainless steel appliances. The electric fireplace & large windows make the living space so inviting. Upstairs has three bedrooms including the master w/ beautiful view, large walk in closet, & 4 pc ensuite. The laundry & additional 4 pc bath complete the upstairs. The basement was fully finished by the developer, w/ another 4 pc bathroom & spacious living area. This home has top of the line window coverings & vinyl flooring throughout, central a/c, a gas bbq line, a new front door with windows for natural light in the foyer, & soffit lighting. Welcome Home!

Built in 2021

Essential Information

MLS® #	E4424754
Price	\$545,000
Bedrooms	3



Bathrooms	3.50
Full Baths	3
Half Baths	1
Square Footage	1,583
Acres	0.00
Year Built	2021
Type	Condo / Townhouse
Sub-Type	Half Duplex
Style	2 Storey
Status	Active

Community Information

Address	11 50 Edinburgh Crt
Area	St. Albert
Subdivision	Erin Ridge North
City	St. Albert
County	ALBERTA
Province	AB
Postal Code	T8N 7X5

Amenities

Amenities	Air Conditioner, Ceiling 9 ft., Deck, No Smoking Home, Parking-Visitor, HRV System
Parking	Double Garage Attached

Interior

Interior Features	ensuite bathroom
Appliances	Air Conditioning-Central, Dishwasher-Built-In, Garage Control, Garage Opener, Hood Fan, Oven-Microwave, Refrigerator, Stacked Washer/Dryer, Stove-Electric, Window Coverings, See Remarks, TV Wall Mount
Heating	Forced Air-1, Natural Gas
Stories	3
Has Basement	Yes
Basement	Full, Finished

Exterior

Exterior	Wood, Stucco
Exterior Features	Backs Onto Park/Trees, Fenced, Landscaped, Low Maintenance Landscape, Playground Nearby, Public Transportation, Schools,

	Shopping Nearby
Roof	Asphalt Shingles
Construction	Wood, Stucco
Foundation	Concrete Perimeter

Additional Information

Date Listed	March 8th, 2025
Days on Market	6
Zoning	Zone 24
Condo Fee	\$186

DATA IS DEEMED RELIABLE BUT IS NOT GUARANTEED ACCURATE BY THE REALTORS® ASSOCIATION OF EDMONTON. COPYRIGHT 2025 BY THE REALTORS® ASSOCIATION OF EDMONTON. ALL RIGHTS RESERVED. Trademarks are owned or controlled by the Canadian Real Estate Association (CREA) and identify real estate professionals who are members of CREA (REALTOR®, REALTORS®) and/or the quality of services they provide (MLS®, Multiple Listing Service®)

Listing information last updated on March 14th, 2025 at 2:17pm MDT