

\$569,900 - 90 Everitt Drive, St. Albert

MLS® #E4424947

\$569,900

3 Bedroom, 2.50 Bathroom, 2,257 sqft
Single Family on 0.00 Acres

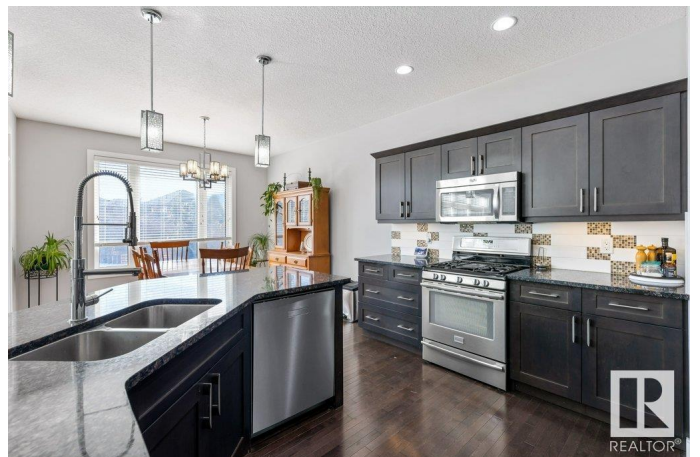
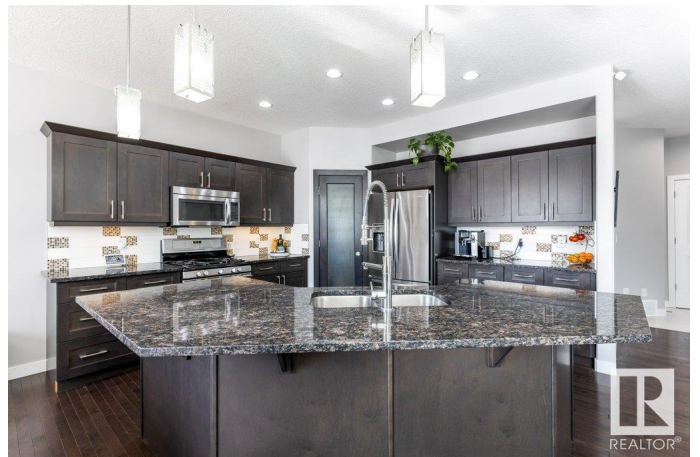
Erin Ridge North, St. Albert, AB

This beautiful 2-storey home offers 2,257 sqft of luxurious living space, thoughtfully designed for comfort and style. The gourmet kitchen boasts professionally crafted maple cabinets, gleaming granite countertops, and a spacious center island, perfect for entertaining. A cozy breakfast nook adds to the charm of the space. The inviting living room is centered around a beautiful gas fireplace, creating a warm and welcoming atmosphere. Upstairs, you'll find three generously sized bedrooms, including a master suite that features a spa-like ensuite and a walk-in closet for ultimate convenience. The expansive bonus room provides ample space for family fun or relaxation. The unfinished basement offers a blank canvas, ready for your personal touch and future development. Step outside to enjoy the large composite deck, complete with privacy glass, and a convenient BBQ gas line, making it the perfect space for summer entertaining or simply relaxing.

Built in 2013

Essential Information

MLS® #	E4424947
Price	\$569,900
Bedrooms	3
Bathrooms	2.50



Full Baths	2
Half Baths	1
Square Footage	2,257
Acres	0.00
Year Built	2013
Type	Single Family
Sub-Type	Detached Single Family
Style	2 Storey
Status	Active

Community Information

Address	90 Everitt Drive
Area	St. Albert
Subdivision	Erin Ridge North
City	St. Albert
County	ALBERTA
Province	AB
Postal Code	T8N 4L2

Amenities

Amenities	Deck, Natural Gas BBQ Hookup
Parking	Double Garage Attached

Interior

Interior Features	ensuite bathroom
Appliances	Dishwasher-Built-In, Dryer, Garage Control, Garage Opener, Microwave Hood Fan, Refrigerator, Stove-Gas, Washer, Window Coverings
Heating	Forced Air-1, Natural Gas
Stories	2
Has Basement	Yes
Basement	Full, Unfinished

Exterior

Exterior	Wood, Stone, Vinyl
Exterior Features	Fenced, Flat Site, Landscaped, Playground Nearby, Public Transportation, Schools, Shopping Nearby, See Remarks
Roof	Asphalt Shingles
Construction	Wood, Stone, Vinyl
Foundation	Concrete Perimeter

Additional Information

Date Listed March 10th, 2025

Days on Market 4

Zoning Zone 24

DATA IS DEEMED RELIABLE BUT IS NOT GUARANTEED ACCURATE BY THE REALTORS® ASSOCIATION OF EDMONTON. COPYRIGHT 2025 BY THE REALTORS® ASSOCIATION OF EDMONTON. ALL RIGHTS RESERVED. Trademarks are owned or controlled by the Canadian Real Estate Association (CREA) and identify real estate professionals who are members of CREA (REALTOR®, REALTORS®) and/or the quality of services they provide (MLS®, Multiple Listing Service®)

Listing information last updated on March 14th, 2025 at 7:02am MDT