

\$529,000 - 313 Grand Meadow Crescent, Edmonton

MLS® #E4432317

\$529,000

4 Bedroom, 3.50 Bathroom, 2,213 sqft

Single Family on 0.00 Acres

Greenview (Edmonton), Edmonton, AB

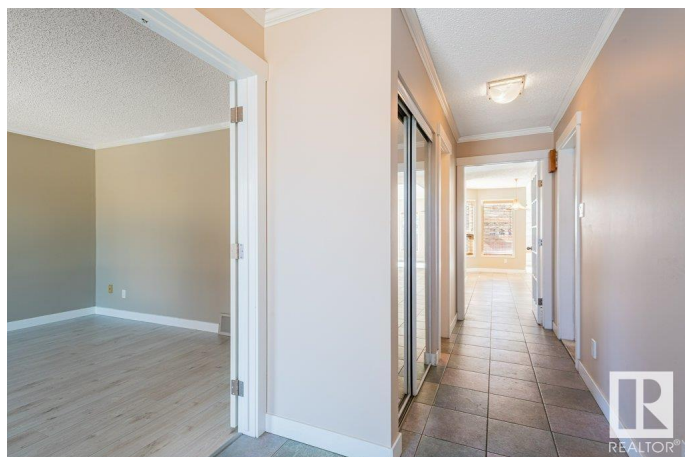
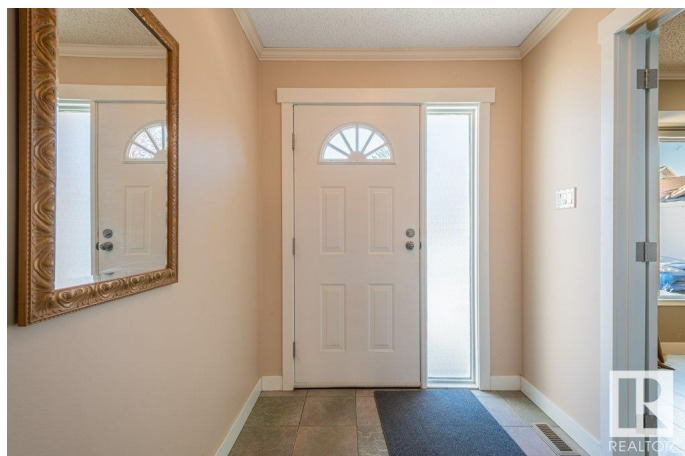
Imagine a street where neighbours wave as they walk by, and your home is the heart of it all. Summer nights are spent in your spacious backyard, setting up an outdoor projection screen for movie nights under the stars—kids sprawled on blankets, popcorn in hand, laughter in the air. A trampoline in the corner keeps the energy going, while you kick back and soak it all in. Vaulted ceilings and wall of windows make it feel open and bright. A wood-burning fireplace, is where board games are played and stories told. The kitchen is big enough to bake cookies with the grandkids without tripping over them as they sneak a snack. Your primary suite is a cozy escape with a walk-in closet, ensuite with jetted tub just waiting for you at the end of the day. A finished basement gives even more room to make more memories. With a newer furnace, hot water tank, and roof, all the big updates are already done. Being just a block from the LRT makes city access a breeze. Some photos virtual staged. This home is a must see!

Built in 1986

Essential Information

MLS® # E4432317

Price \$529,000



Bedrooms	4
Bathrooms	3.50
Full Baths	3
Half Baths	1
Square Footage	2,213
Acres	0.00
Year Built	1986
Type	Single Family
Sub-Type	Detached Single Family
Style	1 and Half Storey
Status	Active

Community Information

Address	313 Grand Meadow Crescent
Area	Edmonton
Subdivision	Greenview (Edmonton)
City	Edmonton
County	ALBERTA
Province	AB
Postal Code	T6L 1W9

Amenities

Amenities	Deck
Parking	Double Garage Attached

Interior

Interior Features	ensuite bathroom
Appliances	Dishwasher-Built-In, Dryer, Fan-Ceiling, Microwave Hood Fan, Refrigerator, Stove-Electric, Washer
Heating	Forced Air-1, Natural Gas
Stories	3
Has Basement	Yes
Basement	Full, Finished

Exterior

Exterior	Wood, Brick, Vinyl
Exterior Features	Back Lane, Cul-De-Sac, Fenced, Golf Nearby, Landscaped
Roof	Asphalt Shingles
Construction	Wood, Brick, Vinyl

Foundation Concrete Perimeter

School Information

Elementary Greenview School
Middle Edith Rogers School
High W.P. Wagner School

Additional Information

Date Listed April 23rd, 2025
Days on Market 7
Zoning Zone 29

DATA IS DEEMED RELIABLE BUT IS NOT GUARANTEED ACCURATE BY THE REALTORS® ASSOCIATION OF EDMONTON. COPYRIGHT 2025 BY THE REALTORS® ASSOCIATION OF EDMONTON. ALL RIGHTS RESERVED.Trademarks are owned or controlled by the Canadian Real Estate Association (CREA) and identify real estate professionals who are members of CREA (REALTOR®, REALTORS®) and/or the quality of services they provide (MLS®, Multiple Listing Service®)
Listing information last updated on April 30th, 2025 at 1:02pm MDT