

## **\$679,900 - 4727 139 Street, Edmonton**

MLS® #E4437801

**\$679,900**

4 Bedroom, 2.50 Bathroom, 1,464 sqft

Single Family on 0.00 Acres

Brookside, Edmonton, AB

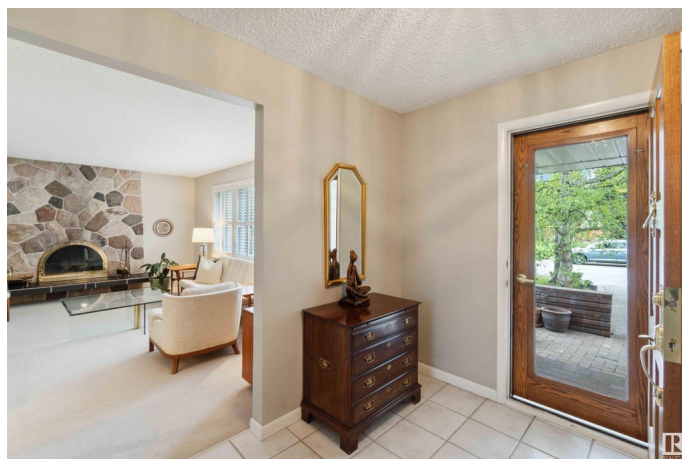
**BROOKSIDES FINEST!** Located on a massive lot, this 4 bedroom, 3 bathroom beautiful bungalow offers over 2,500 sq ft of quality living space! The main floor features a spacious living room with a cozy wood-burning fireplace, a large kitchen with stainless steel appliances, and convenient main floor laundry. The primary bedroom includes a private 2-piece ensuite, accompanied by two additional bedrooms and a 4-piece bathroom. Carpet and tile flooring flow throughout. The fully finished basement boasts a large entertaining area with a wet bar, an extra bedroom, another full bathroom, and a generous storage room. Step outside to a beautifully landscaped backyard with paver stones, mature trees, shrubs, garden beds, and a garden shed. A double attached garage provides added convenience. Enjoy nearby parks, a creek, scenic walking trails, and easy access to major roads including Whitemud Drive and Terwillegar Drive—making this home the perfect balance of space, comfort, and location. All this home needs is YOU!

Built in 1968

### **Essential Information**

MLS® # E4437801

Price \$679,900



|                |                        |
|----------------|------------------------|
| Bedrooms       | 4                      |
| Bathrooms      | 2.50                   |
| Full Baths     | 2                      |
| Half Baths     | 1                      |
| Square Footage | 1,464                  |
| Acres          | 0.00                   |
| Year Built     | 1968                   |
| Type           | Single Family          |
| Sub-Type       | Detached Single Family |
| Style          | Bungalow               |
| Status         | Active                 |

### Community Information

|             |                 |
|-------------|-----------------|
| Address     | 4727 139 Street |
| Area        | Edmonton        |
| Subdivision | Brookside       |
| City        | Edmonton        |
| County      | ALBERTA         |
| Province    | AB              |
| Postal Code | T6H 3Z3         |

### Amenities

|                |   |
|----------------|---|
| Amenities      | Air Conditioner, Detectors Smoke, Parking-Extra, Smart/Program. Thermostat, Wet Bar |
| Parking Spaces | 4   |
| Parking        | Double Garage Attached  |

### Interior

|                   |   |
|-------------------|---|
| Interior Features | ensuite bathroom  |
| Appliances        | Dishwasher-Built-In, Dryer, Garage Control, Garage Opener, Hood Fan, Refrigerator, Stove-Electric, Washer, Window Coverings |
| Heating           | Forced Air-1, Natural Gas   |
| Fireplace         | Yes   |
| Fireplaces        | Glass Door, Mantel, Stone Facing  |
| Stories           | 2   |
| Has Basement      | Yes   |
| Basement          | Full, Finished  |

### Exterior

|                   |  |
|-------------------|--|
| Exterior          | Wood, Brick, Vinyl   |
| Exterior Features | Fenced, Flat Site, Golf Nearby, Landscaped, Level Land, Park/Reserve, Playground Nearby, Public Transportation, Schools, Shopping Nearby, Ski Hill Nearby, Treed Lot, Vegetable Garden |
| Roof              | Asphalt Shingles   |
| Construction      | Wood, Brick, Vinyl   |
| Foundation        | Concrete Perimeter   |

### **School Information**

|            |                        |
|------------|------------------------|
| Elementary | Brookside School       |
| Middle     | Riverbend School       |
| High       | Lillian Osborne School |

### **Additional Information**

|                |                |
|----------------|----------------|
| Date Listed    | May 22nd, 2025 |
| Days on Market | 30             |
| Zoning         | Zone 14        |

DATA IS DEEMED RELIABLE BUT IS NOT GUARANTEED ACCURATE BY THE REALTORS® ASSOCIATION OF EDMONTON. COPYRIGHT 2025 BY THE REALTORS® ASSOCIATION OF EDMONTON. ALL RIGHTS RESERVED. Trademarks are owned or controlled by the Canadian Real Estate Association (CREA) and identify real estate professionals who are members of CREA (REALTOR®, REALTORS®) and/or the quality of services they provide (MLS®, Multiple Listing Service®)

Listing information last updated on June 20th, 2025 at 10:32pm MDT