

\$430,000 - 1324 George Close, Edmonton

MLS® #E4438496

\$430,000

3 Bedroom, 3.50 Bathroom, 1,614 sqft
Single Family on 0.00 Acres

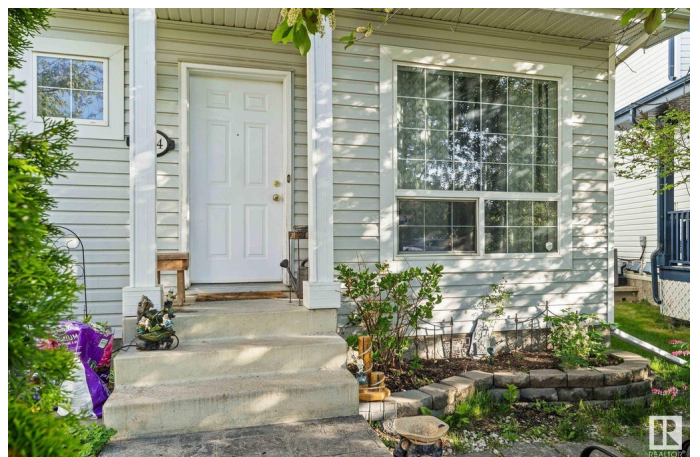
Glastonbury, Edmonton, AB

Welcome home! This lovely 2 storey is tucked away in a quiet cul-de-sac! This property features 3 spacious bedrooms and 3.5 bathrooms, perfect for families. With fresh paint & new flooring, and some new appliances it's completely move-in ready. The finished basement adds even more value, featuring a bedroom, bathroom and second kitchen. With quick access to the Henday, Whitemud, and all local amenities, convenience is at your doorstep. Don't miss the opportunity to own this beautiful home!

Built in 2002

Essential Information

MLS® #	E4438496
Price	\$430,000
Bedrooms	3
Bathrooms	3.50
Full Baths	3
Half Baths	1
Square Footage	1,614
Acres	0.00
Year Built	2002
Type	Single Family
Sub-Type	Detached Single Family
Style	2 Storey



Status Active

Community Information

Address 1324 George Close

Area Edmonton

Subdivision Glastonbury

City Edmonton

County ALBERTA

Province AB

Postal Code T5T 6S2

Amenities

Amenities Deck, Patio

Parking Parking Pad Cement/Paved

Interior

Interior Features ensuite bathroom

Appliances Dryer, Fan-Ceiling, Storage Shed, Washer, Window Coverings, Refrigerators-Two, Stoves-Two, Dishwasher-Two

Heating Forced Air-1, Natural Gas

Stories 3

Has Basement Yes

Basement Full, Finished

Exterior

Exterior Wood, Vinyl

Exterior Features Back Lane, Cul-De-Sac, Fenced, Golf Nearby, Playground Nearby, Schools, Shopping Nearby

Roof Asphalt Shingles

Construction Wood, Vinyl

Foundation Concrete Perimeter

School Information

Elementary Kim Hung,Sis Anna Brockman

Middle Kim Hung,Sis Anna Brockman

High JP, St Oscar Romero

Additional Information

Date Listed May 26th, 2025

Days on Market 72

Zoning	Zone 58
HOA Fees	200
HOA Fees Freq.	Annually

DATA IS DEEMED RELIABLE BUT IS NOT GUARANTEED ACCURATE BY THE REALTORS® ASSOCIATION OF EDMONTON. COPYRIGHT 2025 BY THE REALTORS® ASSOCIATION OF EDMONTON. ALL RIGHTS RESERVED. Trademarks are owned or controlled by the Canadian Real Estate Association (CREA) and identify real estate professionals who are members of CREA (REALTOR®, REALTORS®) and/or the quality of services they provide (MLS®, Multiple Listing Service®)

Listing information last updated on August 6th, 2025 at 2:32am MDT