

\$485,000 - 223 Graham Place, Sherwood Park

MLS® #E4447246

\$485,000

5 Bedroom, 2.50 Bathroom, 1,217 sqft

Single Family on 0.00 Acres

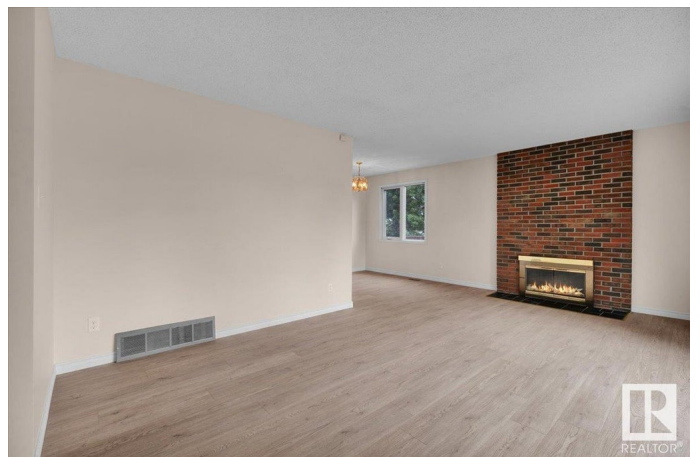
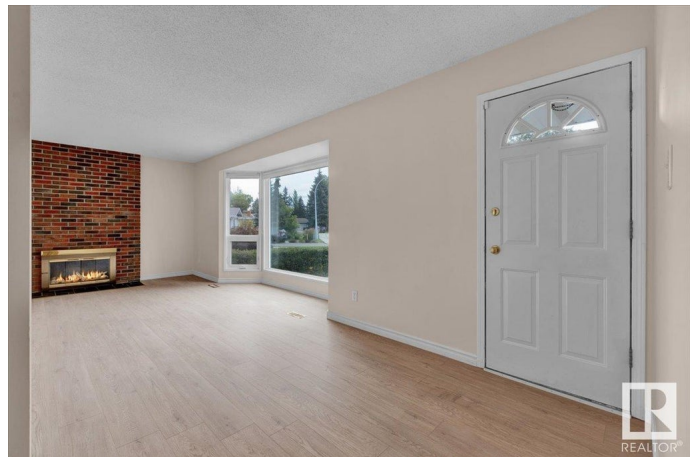
Glen Allan, Sherwood Park, AB

This beautiful bungalow is a must see gem in the neighbourhood of Glen Allan. The location offers easy and convenient access to tons of shopping options, schools, daycare, a recreation complex, public transportation and so much more. The main floor features a light-filled living and dining room with a brick fireplace, primary bedroom with 2 pc powder room ensuite, plus 2 additional bedrooms, and a 3 pc bath. The bright kitchen with tiled backsplash offers plenty of cabinet space for the avid cook. Main floor has new vinyl plank flooring throughout and new linoleum flooring in kitchen and bathrooms and fresh paint. Fully finished basement offers lots of space for families to entertain and relax- a huge rec room, 2 bedrooms, 3 pc bath, lots of storage, and washer/dryer and freezer. The home boasts gorgeous landscaping and mature trees; fully fenced backyard features a wood deck and firepit as well as a separate fully fenced dog run and double detached garage. This adorable home is move- in ready!

Built in 1974

Essential Information

MLS® #	E4447246
Price	\$485,000
Bedrooms	5



Bathrooms	2.50
Full Baths	2
Half Baths	1
Square Footage	1,217
Acres	0.00
Year Built	1974
Type	Single Family
Sub-Type	Detached Single Family
Style	Bungalow
Status	Active

Community Information

Address	223 Graham Place
Area	Sherwood Park
Subdivision	Glen Allan
City	Sherwood Park
County	ALBERTA
Province	AB
Postal Code	T8A 3N8

Amenities

Amenities	Fire Pit
Parking	Double Garage Detached

Interior

Interior Features	ensuite bathroom
Appliances	Dishwasher-Built-In, Dryer, Freezer, Garage Opener, Microwave Hood Fan, Refrigerator, Storage Shed, Stove-Electric, Vacuum System Attachments, Vacuum Systems, Washer, Curtains and Blinds
Heating	Forced Air-1, Natural Gas
Fireplace	Yes
Fireplaces	Brass Surround, Brick Facing
Stories	2
Has Basement	Yes
Basement	Full, Finished

Exterior

Exterior	Wood, Brick, Vinyl
Exterior Features	Cul-De-Sac, Fenced, Fruit Trees/Shrubs, Playground Nearby, Public

	Transportation, Schools, Shopping Nearby, Treed Lot
Roof	Asphalt Shingles
Construction	Wood, Brick, Vinyl
Foundation	Concrete Perimeter

Additional Information

Date Listed	July 11th, 2025
Days on Market	6
Zoning	Zone 25

DATA IS DEEMED RELIABLE BUT IS NOT GUARANTEED ACCURATE BY THE REALTORS® ASSOCIATION OF EDMONTON. COPYRIGHT 2025 BY THE REALTORS® ASSOCIATION OF EDMONTON. ALL RIGHTS RESERVED. Trademarks are owned or controlled by the Canadian Real Estate Association (CREA) and identify real estate professionals who are members of CREA (REALTOR®, REALTORS®) and/or the quality of services they provide (MLS®, Multiple Listing Service®)

Listing information last updated on July 17th, 2025 at 5:17pm MDT