

## \$144,999 - 206 12110 119 Avenue, Edmonton

MLS® #E4448116

**\$144,999**

2 Bedroom, 2.00 Bathroom, 807 sqft

Condo / Townhouse on 0.00 Acres

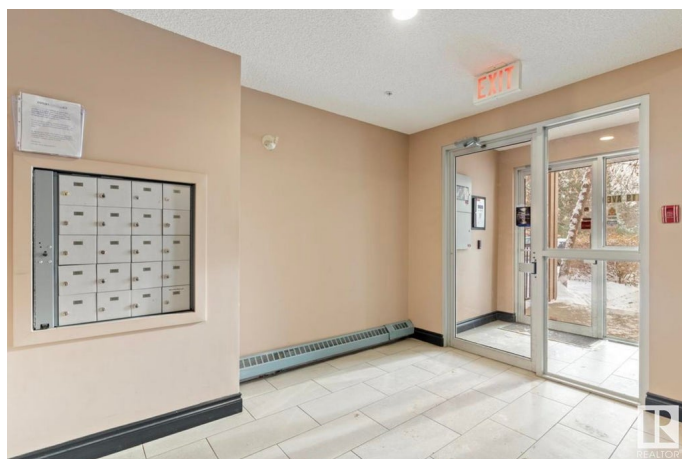
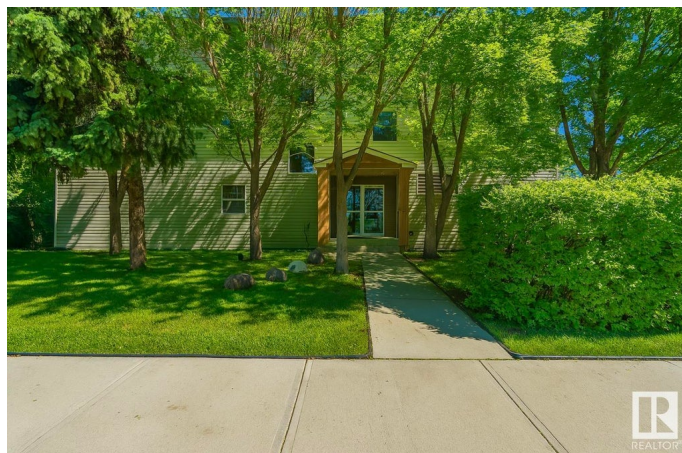
Prince Charles, Edmonton, AB

Renovated 2 Bed, 2 Bath Condo with In-Suite Laundry and Elevator in Prince Charles! This beautifully updated unit features an airy open-concept layout that seamlessly connects the kitchen, living, and dining areas—perfect for modern living. Large windows flood the space with natural light, and the kitchen is equipped with brand-new stainless steel appliances. Step out onto your private balcony with stunning views of downtown Edmonton. The spacious master bedroom includes a 4-piece ensuite, while the second bedroom is ideal for guests or a home office. Enjoy the convenience of in-suite laundry, covered parking, a fitness room, and elevator access. Ideally located just minutes from NAIT, downtown, public transit, and major commuter routes, and within close proximity to shopping, schools, parks, and more—this condo offers the perfect balance of comfort, style, and location.

Built in 2002

### Essential Information

MLS® #	E4448116
Price	\$144,999
Bedrooms	2
Bathrooms	2.00
Full Baths	2



Square Footage	807
Acres	0.00
Year Built	2002
Type	Condo / Townhouse
Sub-Type	Lowrise Apartment
Style	Single Level Apartment
Status	Active

### Community Information

Address	206 12110 119 Avenue
Area	Edmonton
Subdivision	Prince Charles
City	Edmonton
County	ALBERTA
Province	AB
Postal Code	T5L 5G9

### Amenities

Amenities	Detectors Smoke, Exterior Walls- 2"x6", No Animal Home, No Smoking Home, Parking-Plug-Ins, Parking-Visitor, Vinyl Windows
Parking	Single Carport, See Remarks

### Interior

Interior Features	ensuite bathroom
Appliances	Dryer, Hood Fan, Refrigerator, Stove-Electric, Washer
Heating	Baseboard, Hot Water, Natural Gas
# of Stories	3
Stories	1
Has Basement	Yes
Basement	None, No Basement

### Exterior

Exterior	Wood, Vinyl
Exterior Features	Picnic Area, Public Swimming Pool, Public Transportation, Schools, Shopping Nearby, View City, View Downtown, See Remarks
Roof	Asphalt Shingles
Construction	Wood, Vinyl
Foundation	Concrete Perimeter

### Additional Information

Date Listed	July 16th, 2025
Days on Market	13
Zoning	Zone 04
Condo Fee	\$433

DATA IS DEEMED RELIABLE BUT IS NOT GUARANTEED ACCURATE BY THE REALTORS® ASSOCIATION OF EDMONTON. COPYRIGHT 2025 BY THE REALTORS® ASSOCIATION OF EDMONTON. ALL RIGHTS RESERVED. Trademarks are owned or controlled by the Canadian Real Estate Association (CREA) and identify real estate professionals who are members of CREA (REALTOR®, REALTORS®) and/or the quality of services they provide (MLS®, Multiple Listing Service®)

Listing information last updated on July 29th, 2025 at 12:02pm MDT